

Long Covid Symptoms? Feeling in the dark about the way forward?

**The COVID Antibody Spectrum Test could
provide important answers**

Around 60% of Long COVID patients have incomplete antibody profiles, contributing to persistent virus and extended illness.

Understanding your antibody profile can identify treatment options.

*Scan for more
information*



What is the COVID Antibody Spectrum Test?

The COVID Antibody Spectrum Test is a unique blood test that measures the strength and range of your body's spike antibodies against 12 different SARS-CoV-2 spike protein variants. This can help your doctor understand whether your immune response may be contributing to Long COVID symptoms, guiding possible treatment options. The test provides two key insights:

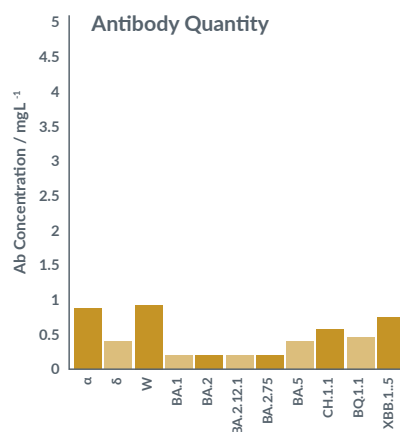
- **Antibody Quality:** How effective your antibodies are at recognising and neutralising the virus.
- **Antibody Quantity:** The overall level of antibodies in your blood.

Following COVID infection, some people may have lower-quality or insufficient quantities of spike antibodies, which could mean that the virus lingers in the body and contributes to ongoing symptoms i.e. Long COVID.

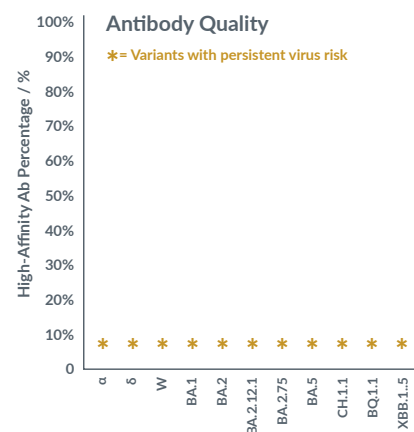
Immune responses are unique to every patient. Personalised care is key, and so understanding your immunity profile and then optimising your immunity may reduce your symptoms and support recovery from Long COVID.

Patient with Long Covid

Antibody Quantity

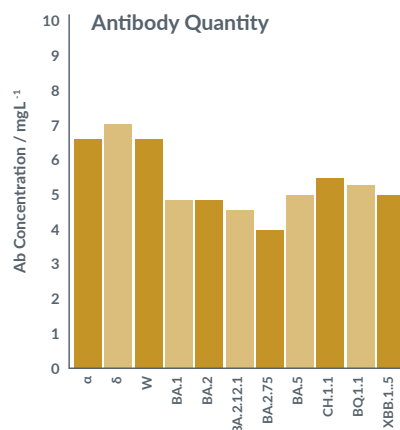


Antibody Quality

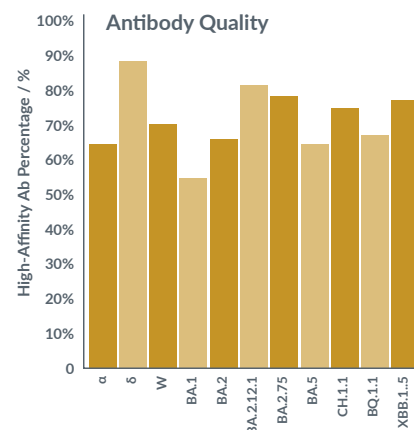


Healthy Individual

Antibody Quantity



Antibody Quality



Why Have the Test?

Long COVID is a relatively new disease in which clinical services are fragmented, and understanding of the disease is still evolving. Besides debilitating symptoms, patient experience frustration and even denial of their condition.



Comprehensive Analysis

Understand both the quantity and quality of antibodies across 12 SARS-CoV-2 spike protein variants.



Personalised Insight

Identify potential gaps in your unique spike antibody & immunity profile, leading to potential treatment options.

How to Arrange a Test?



Ask a Doctor

Ask your doctor to arrange a COVID Antibody Spectrum Test.



Reach Out to Us

Contact us to direct you to a clinic or doctor offering the test.

More Information

attomarker.com/about-long-covid-spectrum-test

Scan for more information

